

Please try the following to configure IW and the SIIG parallel card.

1. Open the Device Manager by Right-click on 'This PC' and select 'Manage', then select Device Manager in the left pane.
2. Select 'Ports (COM & LPT)'.
3. Get Properties of the SIIG Parallel Port by right-clicking it and selecting 'Properties'.
4. Note what port and base address are being used. In the attached image example below the port is **LPT3** and the address **EFF8**. [Fig 1]
5. Open the file Ports.ini found in "C:\INDEC BioSystems\Imagingworkbench\Params"
6. Locate the section of LPT ports. Either modify the current values or create a new entry so that the values in the ini file match those of the SIIG card (Fig 2).
7. Save the ini file.
8. Launch IW and select the device using the correct LPT port from the 'Choose Peripheral Devices' menu.

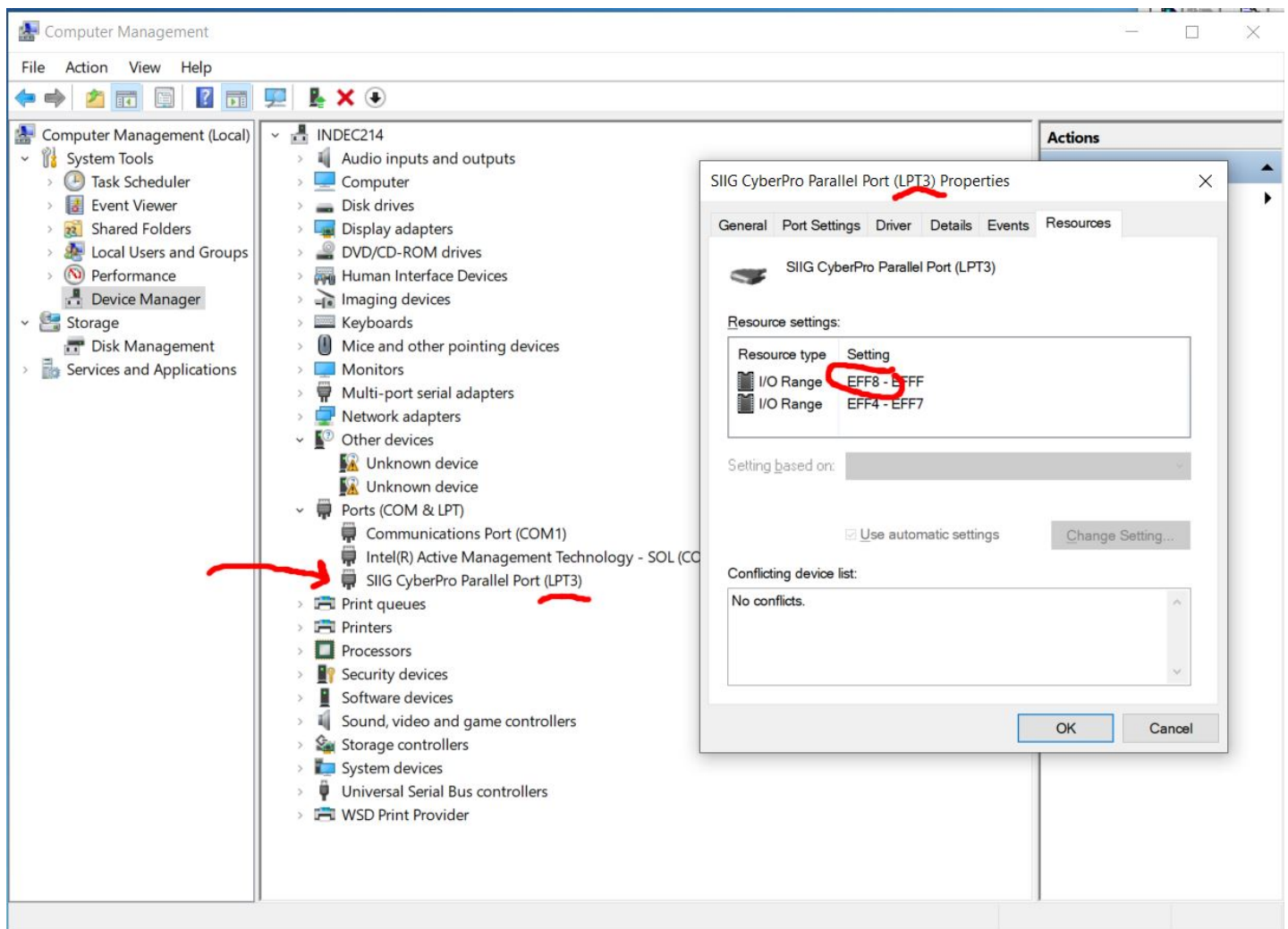


Fig 1

```
Ports.ini - Notepad
File Edit Format View Help
; 2 0 0 output 0 Data 0
; 3 1 0 output 1 1
; 4 2 0 output 2 2
; 5 3 0 output 3 3
; 6 4 0 output 4 4
; 7 5 0 output 5 5
; 8 6 0 output 6 6
; 9 7 0 output 7 7
; 10 0 1 input Ack 6 - mapped to 0
; 11 1 1 input Busy 7 - mapped to 1
; 12 2 1 input PE 5 - mapped to 2
; 13 3 1 input Select 4 - mapped to 3
; 14 1 2 output AutoFd 9
; 15 4 1 input Error 3 - NOT mapped
; 16 2 2 output Init 10
; 17 3 2 output Slct In 11
; 18-25 GROUND
;
;
;+++++
[LPT1]
Version=1
; Specify the base-address for the port
BaseAddress=0xDFF8

[LPT3]
Version=1
; Specify the base-address for the port
BaseAddress=0xEFF8

[VariableInfo]

[wavelengthParallelPins]

[ShutterParallelPins]
```

Fig 2